

Theodore Klein Plant Awards

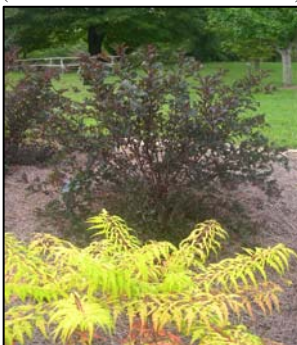
Promoting New and Superior Plants for Kentucky Landscapes

Magnolia virginiana var. australis
(Evergreen Sweetbay Magnolia)

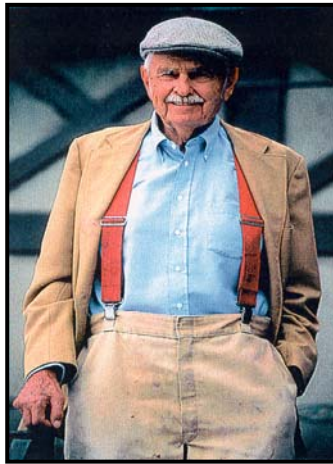


This evergreen variety of an old Kentucky favorite makes an excellent garden plant. Plants will grow 20-30' tall with upright outline and dark, thick glossy green leaves with white undersides. Two-inch-wide, lemon-scented creamy flowers grace the plant in late spring and sporadically through the summer. An excellent choice for full sun or part shade in any reasonable soil.

Physocarpus opulifolius
(‘Seward’-Summer Wine™)



This almost indestructible shrub is a standout for the summer garden. The mahogany foliage is deeper and holds its color better than other varieties and the overall growth is more uniform and compact than others as well. Grows to 4-6' tall and wide and is best in full sun. Tolerates most average garden soils.



2007

Acanthus spinosus
(Bear's Breeches)



is a herbaceous perennial prized for exceptional foliage, unique flowers and tremendous adaptability. Happy in full sun or part shade, this tough plant offers glossy dark green spiny foliage in a mass up to about 24". The unique late spring flowers of white, purple and mauve are produced on tall husky spikes that extend a foot or more about the foliage.



Metasequoia glyptostroboides
(Dawn Redwood)



This ancient living fossil species is an amazingly pest resistant and adaptable deciduous conifer for the Kentucky landscape. Plants are tightly conical, 60'-80' tall with uniform outline, bright green needles and shredding bark. It shows wide soil tolerance, rapid growth and is very long lived. Cultivars include the weeping 'Miss Grace' and the gold-foliaged 'Ogon.'

Bignonia capreolata
(Cross Vine)



This Southeast native woody vine is an excellent choice for full sun or part shade. Semi-evergreen foliage of dark leathery green provides the perfect foil for brilliant orange (occasionally scarlet) trumpet blooms in late spring. Blooms range from yellow-orange ('Tangerine Beauty') to bright red ('Atrosanguinea'). This clinging vine is excellent for rock walls or arbors and is highly pest resistant.



The Theodore Klein Plant Awards were created to promote superior plants for the Kentucky landscape. The program is sponsored jointly by the University of Kentucky, the Kentucky Department of Agriculture, the Kentucky Nursery and Landscape Association and Yew Dell Gardens.

For more information on the Klein Awards and for a downloadable version of the 2007 poster, go to UK's Dr. Win Dunwell's web site:

<http://www.ca.uky.edu/HLA/Dunwell/TKleinPA.html>