

Happy New Year

The University of Kentucky Nursery Crops Team is pleased to announce the continuation of the **KYNNURSERIES-L LISTSERV** as well as the continuation of the popular monthly bulletins.

Common Questions...

Each newsletter will include common questions received by members of the Nursery Crops Team.

Q: Who are you?

A: My name is Joshua Knight. I graduated in Spring of 2013 with a B.S. in Sustainable Agriculture from the Horticulture Department at the University of Kentucky. I am currently working on an M.S. in Integrated Plant and Soil Science. I have worked on several small farms in Florida, Georgia, New Mexico, Kentucky and even southern Japan. I am taking over the position vacated by Sarah Vanek in 2014.

Q: Will you be sending out the bulletins on diseases and pests like Sarah did?

A: Yes! Though I do not have a graduate degree in Entomology, I will do my best to provide informative End-of-Month bulletins on relevant pests and diseases.

Nursery Crops Team

Winston Dunwell
Extension Professor
270.365.7541 x209

Dewayne Ingram
Extension Professor
859.257.8903

Carey Grable
Extension Associate
Western Kentucky
270.365.7541 x279

Joshua Knight
Extension Associate
Central/Eastern Kentucky
859.257.1273

<https://nursery-crop-extension.ca.uky.edu/>



Mature Oystershell scales settled near the bud of an aspen.

In This Issue

- Dormant Season Pest Management (Page 2)
- Dormant Season Disease Management



Bagworm bags

Bagworm caterpillar/moth

Host Plants: Many species including, Arborvitae, Cherry Laurel, Falsecypress, Juniper, Leyland Cypress

Dormant Season Control: Remove bags.



Eastern tent caterpillar egg mass

Eastern Tent Caterpillar

Host Plants: Cherries, Crabapples

Dormant Season Control: Prune out egg masses.



The lower leaf surface of boxwood removed to reveal leaf miner larvae / maggots.

Boxwood leafminer

Host Plants: Boxwood

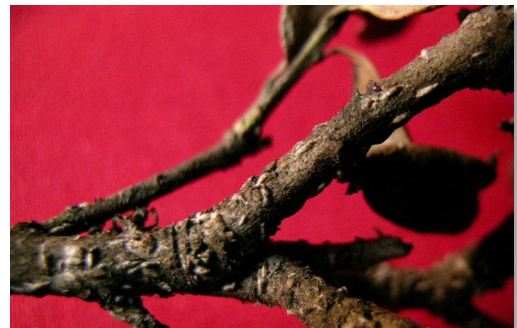
Control: Pinch leaves hard enough to kill maggots in the infested leaves. Chemical: drench with Discus.

Dormant Season Pest Management

Though many insect pests are not active at this point in the year, now is a good time to take steps to control them.

Additionally, when plants are dormant (before the buds begin to swell), dormant oil can be used to control certain scale insects.

Once the buds begin to swell, the use of dormant oil can result in phytotoxicity.



Japanese maple scale on Holly stem

Scale insects

Japanese maple scale

Fletcher scale

Oystershell scale

Euonymus scale

Host Plants: Ornamental Fruit Trees, Hawthorn, Linden, Maple, Oak, Sweet Gum, Tuliptree, Euonymus, Boxwood, Cotoneaster, Lilac, Viburnum, Arborvitae, Yew, several others.

Dormant Season Control: Dormant Oil

Specific scale resources:

[Japanese maple scale \(UT Extension—W277\)](#)

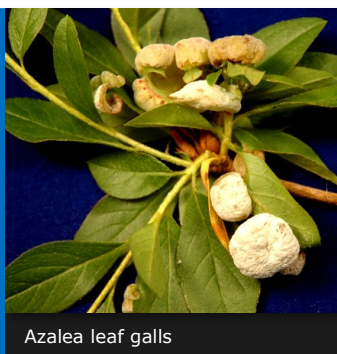
[Fletcher scale on Yew \(UK Entomology\)](#)

[Oystershell scale \(UK Entomology\)](#)

[Euonymus scale \(UK Entomology\)](#)

Dormant Season Disease Control

Most diseases are inactive in the winter, protected from the cold by "survival structures." This represents a unique opportunity for growers to control and sometimes even eradicate a disease, as the cold weather combined with proper sanitation procedures makes the spread of disease un-



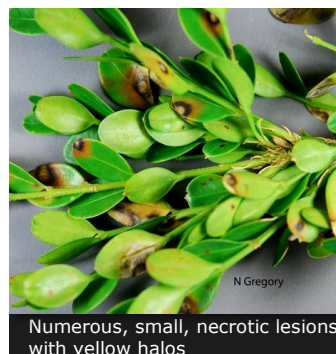
Azalea leaf galls

Azalea leaf gall

Host Plant: Azalea

Pathogen: Fungus

Dormant Season Control: Apply Daconil Ultrex, Dithane or Fore before bud break.



Numerous, small, necrotic lesions with yellow halos

Boxwood blight

Host Plant: Boxwood

Pathogen: Fungus

Dormant Season Control: Scout for Boxwood blight, quarantine suspected plants, submit samples to diagnostic lab and remove infected plants.



Crown gall on Euonymus

Crown gall

Host Plant: Several including Holly, Euonymus, and Rhododendron. 93 Families of plants.

Pathogen: Bacteria

Dormant Season Control: Scout for symptoms, sanitize pruners when pruning, remove infected plants.



Leaves turn brown from the edges and tips, then wilt and die.



Dark streaks seen in sapwood if bark is peeled back.

Verticillium wilt

Host Plant: Magnolia, Redbud, Smokebush, Rose, Maple, Sumac, Azalea, Buckeye, many others

Pathogen: Fungus

Dormant Season Control: Resistant varieties available. Sanitize frequently when pruning roots and canopy to avoid spreading verticillium wilt.



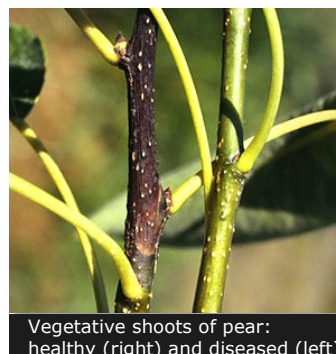
Pear shoot with fire blight

Fire blight

Host Plant: Rosaceae (apples, pears, etc)

Pathogen: Bacteria

Dormant Season Control: Prune out any cankered or diseased branches 4" below sign of infection and destroy. Remove infected plants in field margins.



Vegetative shoots of pear: healthy (right) and diseased (left)

The University of Kentucky's **Nursery Crop Extension Research Team** is based out of two locations across the bluegrass to better serve our producers.

The **University of Kentucky Research and Education Center (UKREC)** in **Princeton** serves western Kentucky producers while our facilities and personnel on main campus in **Lexington** serve central and eastern Kentucky producers.

Check out our [YouTube Channel!](#)

Like us on [facebook!](#)

Contact Us

Western Kentucky

UK Research & Education Center
1205 Hopkinsville Street
P.O. Box 496
Princeton, KY 42445
270-365-7541

Central / Eastern Kentucky

UK Main Campus
Horticulture Department
N-318 Ag. Science Center North
859-257-1273

Visit us on the web at

<https://nursery-crop-extension.ca.uky.edu/>

An Equal Opportunity University | University of Kentucky, College of Agriculture



Educational programs of Kentucky Cooperative Extension serve all people regardless of race, color, age, sex, religion, disability, or national origin. University of Kentucky, Kentucky State University, U.S. Department of Agriculture, and Kentucky Counties, Cooperating. Disabilities accommodated with prior notification.